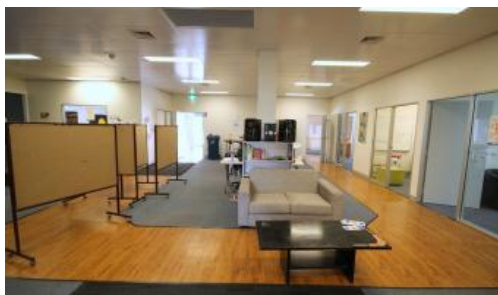


Sold



169 Imlay Street Eden

EXCEPTIONAL COMMERCIAL FREEHOLD

Positioned in Eden's main street, quality 6 year old 763m2 approx. commercial building set on a whopping 1914m2 dual street frontage site with plenty of scope for further development/subdivision. Comprising a street level retail area of 271m2 approx, service/store of 260m2, staff amenities 40m2 and a basement area of 192m2. The building is engineered for a second storey (ideal for offices, residential accommodation etc). Available for Immediate Inspection.

This information has been provided to us by third parties and we do not accept any responsibility for its accuracy. You should make your own enquiries and check the information so as to determine whether or not this information is in fact accurate. You must make your own assessment and obtain professional advice if necessary.

1,914 m2

Price	SOLD for \$765,000
Property Type	Commercial
Property ID	524
Office Area	0
Land Area	1,914 m2
Floor Area	763 m2

Agent Details

Chris Wilson - 0427 003 406

Office Details

174 Imlay St Eden NSW 2551
Australia
02 6496 3583

