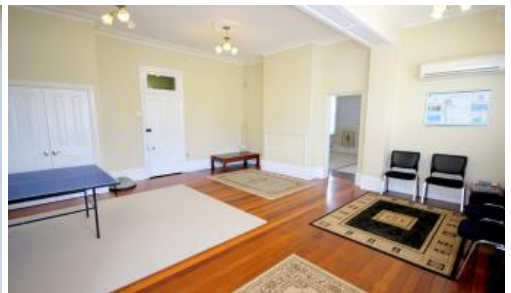


Sold



## 157 Imlay St Eden

### A TIMELESS CLASSIC

Eden's old Post Office building circa 1890 set on an amazing high exposure 1581m<sup>2</sup> corner site. The magnificent building boasts original features of marble open fireplaces, 6 inch hardwood floorboards, 12 foot ceilings, period ceiling roses, panel timber doors, 19 inch external brick walls and a charm from yesteryear. Yet with all the 21<sup>st</sup> century comforts including modern kitchen & bathroom areas, reverse cycle air con etc. Comprising seven rooms on street level and a labyrinth of rooms including cellar and strong room downstairs, excellent rear yard access which includes an additional workshop, storage bungalow and small amenities block. Located on the edge of Eden's CBD close to most amenities and only 500m from the beach. Brilliant period home or outstanding development potential (STCA) as a bed and breakfast, commercial rooms/offices or as both residence and work space combined.

### Your piece of history.

This information has been provided to us by third parties and we do not accept any responsibility for its accuracy. You should make your own enquiries and check the information so as to determine whether or not this information is in fact accurate. You must make your own assessment and obtain professional advice if necessary.

3 2 4 1,581 m<sup>2</sup>

<b>Price</b>	SOLD for \$470,000
<b>Property Type</b>	Residential
<b>Property ID</b>	1134
<b>Office Area</b>	0
<b>Land Area</b>	1,581 m <sup>2</sup>

### Agent Details

Chris Wilson - 0427 003 406

### Office Details

174 Imlay St Eden NSW 2551  
Australia  
02 6496 3583

