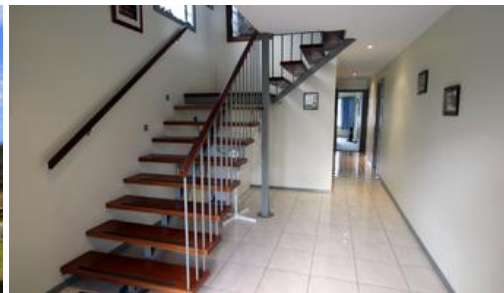


Sold



## 17-19 Bellevue Pl Eden

### CLEAR VIEW

Spectacular unimpeded water views out across Twofold Bay and beyond to the hinterland are ever present from all main rooms of this impressive, 4 bedroom home which is tucked away at the end of a quiet cul de sac on an elevated, near level 1/4 acre allotment. Custom built and generously proportioned throughout, the home includes a wow factor entrance with bespoke staircase, expansive open living and dining including office area featuring double glazing & hardwood floors flowing out to under roof tiled balcony to luxuriate in the views and a gleaming fully equipped kitchen (S/S appliances) at the fulcrum. Whopping bedrooms (4<sup>th</sup> BR doubles as a 2<sup>nd</sup> living), BIRs, 2 excellent bathrooms, and monster garage/workshop. Easy access fabulously landscaped 1032m<sup>2</sup> block complete with vegie gardens, fruit trees, garden shed etc. **The choice is clear.**

This information has been provided to us by third parties and we do not accept any responsibility for its accuracy. You should make your own enquiries and check the information so as to determine whether or not this information is in fact accurate. You must make your own assessment and obtain professional advice if necessary.

4 2 2

<b>Price</b>	SOLD for \$660,000
<b>Property Type</b>	Residential
<b>Property ID</b>	1195
<b>Office Area</b>	0
<b>Land Area</b>	1,032 m2

### Agent Details

Chris Wilson - 0427 003 406

### Office Details

174 Imlay St Eden NSW 2551  
Australia  
02 6496 3583

